



MARIA

PLAYA DEL CARMEN



*Welcome to serenity*





# OUR BUSINESS SYSTEM



**BUILDING**

Trust

**ARTEZA**  
CONSTRUCTORA

Experience and Commitment



effectiveness in  
**MARKETING**

**MARENA**  
REAL ESTATE

Professionalism and Results



Optimization in  
**OPERATION**

**corax**  
MANAGEMENT

Planning and Efficiency







# PRIVILEGED LOCATION

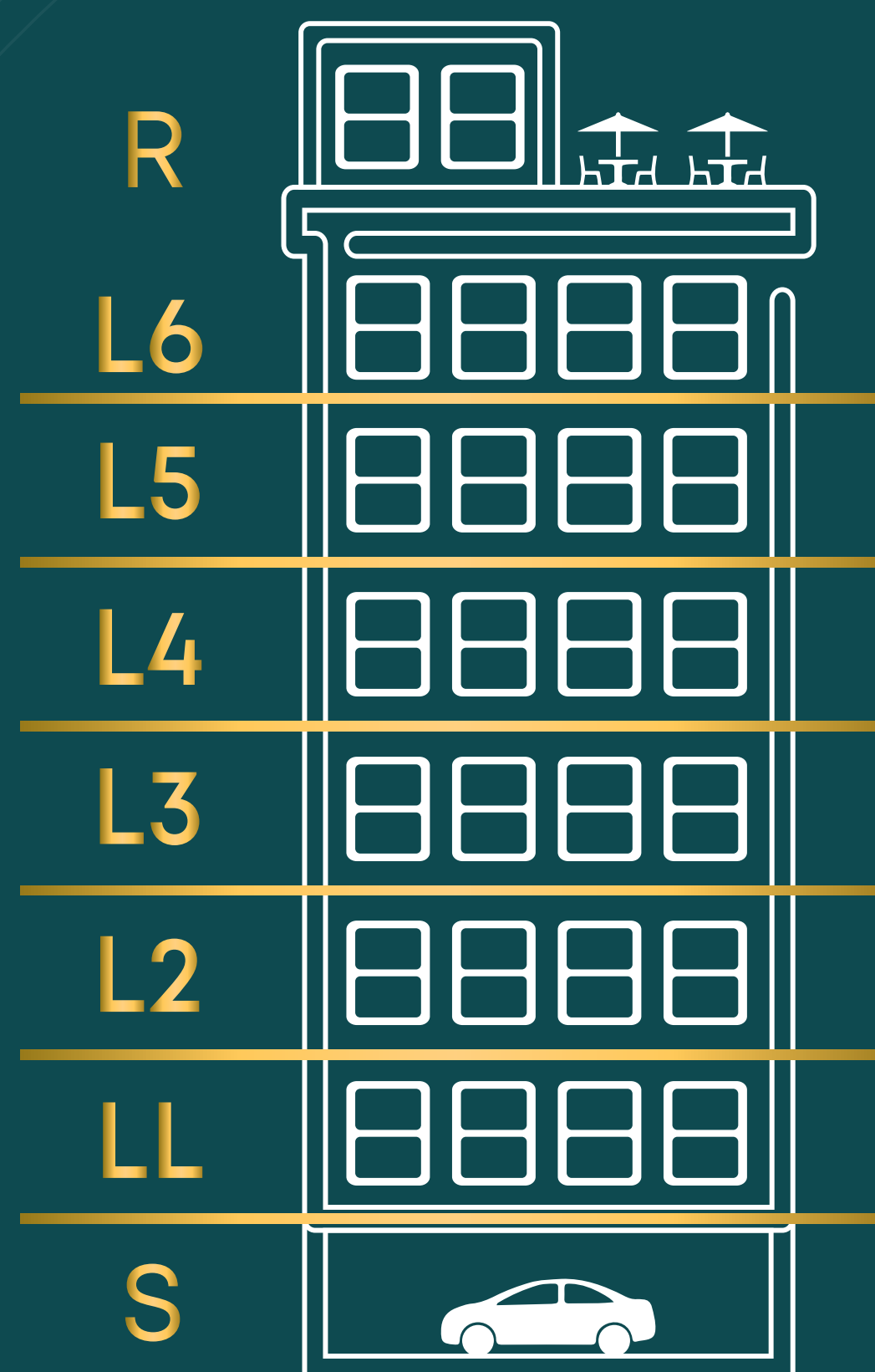
MAIA is located on the Fifth Avenue where you can spend many incredible moments, enjoying the great gastronomic and retail variety this emblematic promenade has to offer.



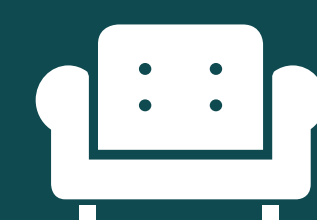
At just a five minute walk is the blissful beach "Punta Esmeralda"







54  
Units



Furnished



Equipped



Decorated

Studios  
1 & 2 Bedrooms  
Penthouses

MAIA  
PLAYA DEL CARMEN



\*\* illustrative images





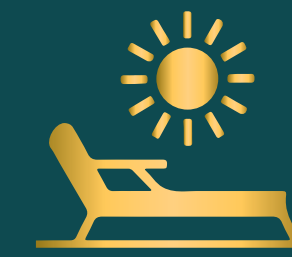
# AMENITIES & SERVICES



Sky Bar



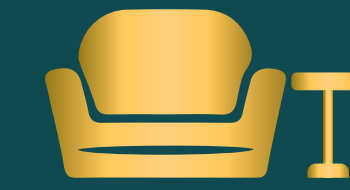
Yoga Area



Sunbathing



Infinity Pool



Lounge Area



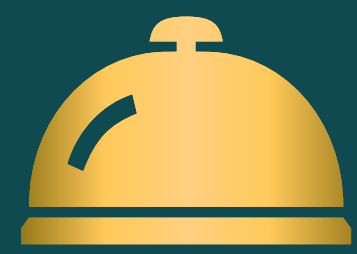
Parking  
for Bikes



Underground  
Parking



Restaurant



Reception



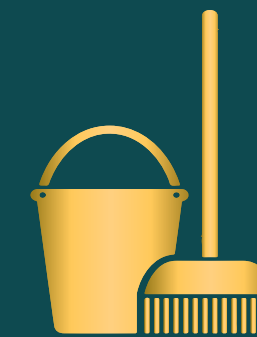
Elevator



Security



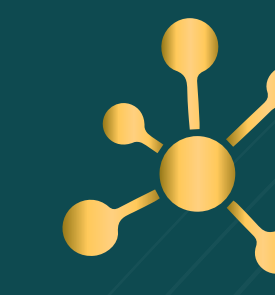
Wi Fi



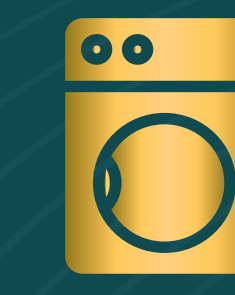
Cleanliness



General Mant.



Platform  
Requirements



Laundry



CCTV



Ice Machine

Privacy & Exclusivity guaranteed in a Roof with sea views to enjoy  
of the best sunrises and sunsets in the Riviera Maya.

  
**MAIA**  
PLAYA DEL CARMEN

\*\* illustrative images





\*\* illustrative images





\*\* illustrative images





\*\* illustrative images



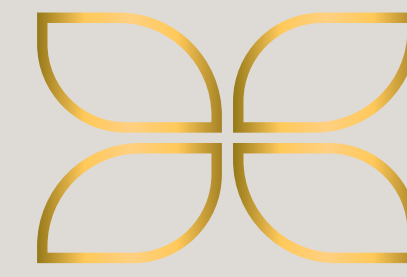


# Privacy and Exclusivity



\*\* illustrative images





# TIPOLOGIES

From 388 *sqft* to 1948 *sqft*, **studios**, 1 and 2 **bedrooms**, and **penthouses**. Options with a **plunge pool** and "lock off" system

TURNKEY



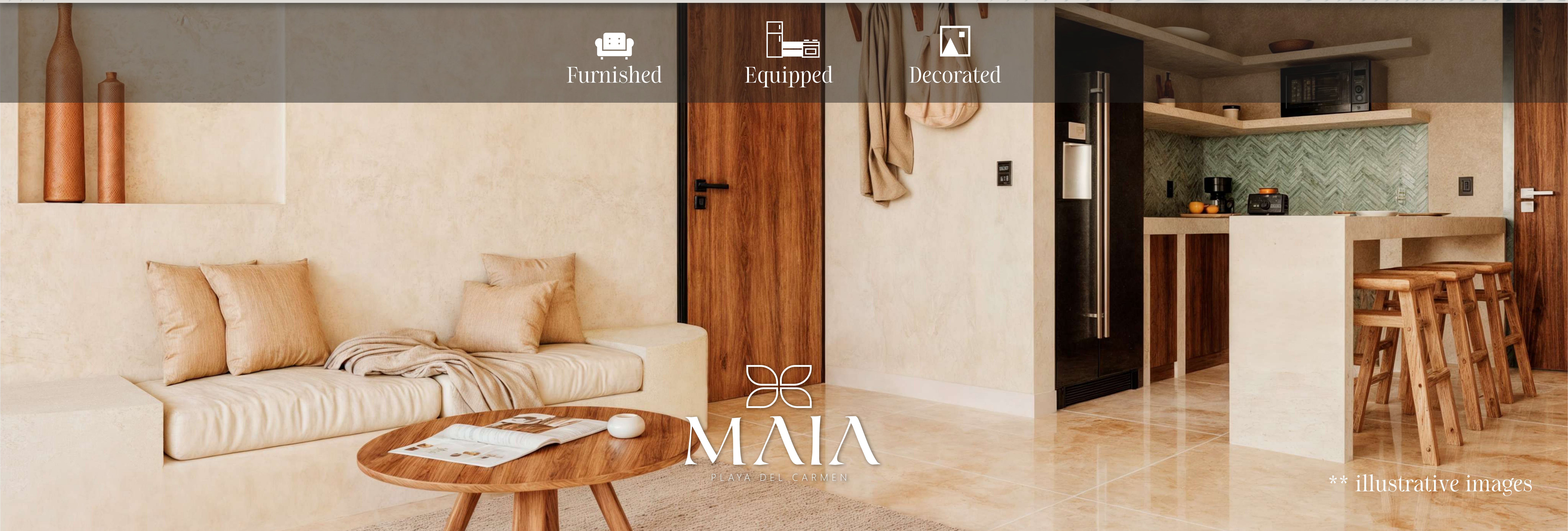
Furnished



Equipped



Decorated



  
**MAIA**  
PLAYA DEL CARMEN

\*\* illustrative images





# INTERIOR DESIGN

Inspired by the **Mediterranean concept**, combining **rustic** and **modern textures**, applying greater value to each through their contrast.  
Spacious, illuminated and finely decorated spaces to immerse you in the MAIA experience.



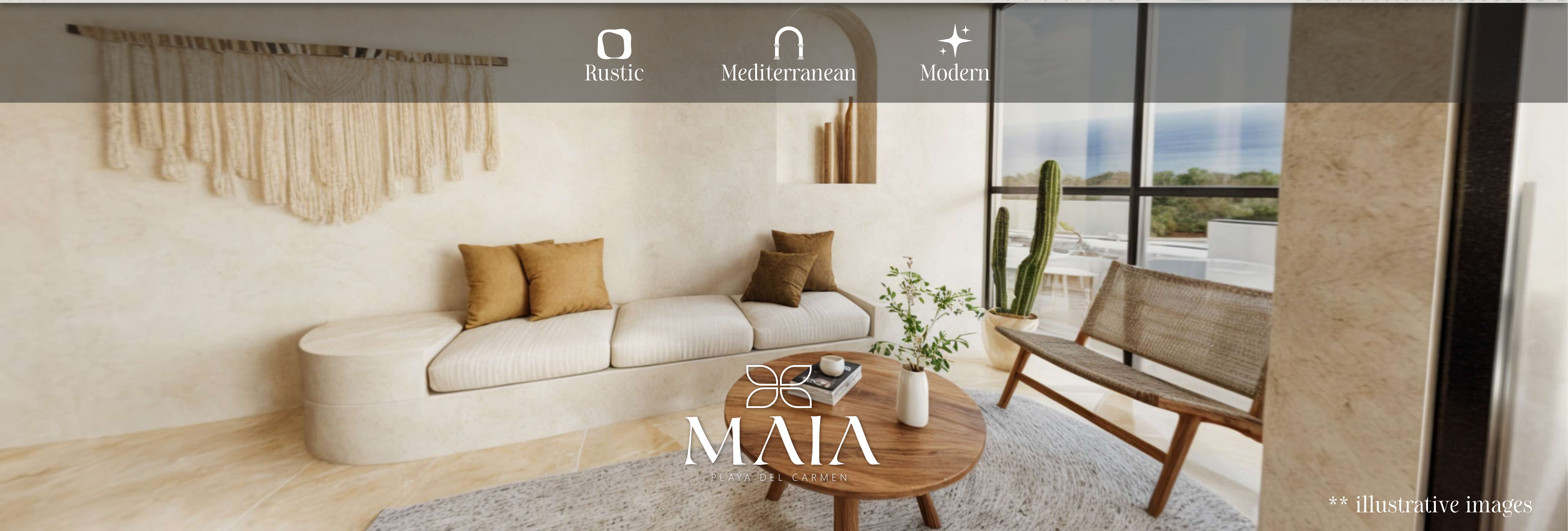
Rustic



Mediterranean



Modern



  
**MAIA**  
PLAYA DEL CARMEN

\*\* illustrative images





# Studio “A”

Entrance  
>>>>>>>>



\*\*illustrative images

Caribbean Sea  
Fifth Avenue



R	
L6	
L5	
L4	
L3	
N2	
LL	
UP	

Interior  
377 sqft

Exterior  
43 sqft

TOTAL  
420 sqft

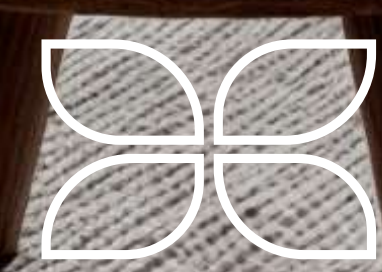
Furnished

Equipped

Decorated

prices starting at  
\$MX **2,450,000**





\*\* illustrative images





STUDIOS "A"





# Studio “B”

Entrance  
>>>>>>>



\*\*illustrative images

Caribbean Sea  
Fifth Avenue



R	
L6	
L5	
L4	
L3	
L2	
LL	
UP	

Interior  
360 sqft

Exterior  
27 sqft

TOTAL  
387 sqft

Furnished

Equipped

Decorated

prices starting at  
**\$MX 2,150,000**





\*\* illustrative images





# 1 Bedroom "A"



\*\*illustrative images

Entrance

Caribbean Sea  
Fifth Avenue



R	
L6	
L5	
L4	
L3	
L2	
LL	
UP	

Interior  
496 sqft

Exterior  
64 sqft

TOTAL  
560 sqft

Furnished

Equipped

Decorated

prices starting at  
**\$MX 2,700,000**





\*\* illustrative images





1 BEDROOM "A" & "B" View





# 1 Bedroom “B”



Entrance

\*\*illustrative images

Caribbean Sea  
Fifth Avenue



R	
L6	
L5	
L4	
L3	
L2	
LL	
UP	

Interior  
517 sqft

Exterior  
43 sqft

TOTAL  
560 sqft

Furnished

Equipped

Decorated

Virtual Tour



prices starting at  
\$MX **2,700,000**





# 1 Bedroom “C”



Entrance



\*\*illustrative images

Caribbean Sea  
Fifth Avenue



R	
L6	
L5	
L4	
L3	
L2	
LL	
UP	

Interior  
377 sqft

Exterior  
86 sqft

TOTAL  
463 sqft

Furnished

Equipped

Decorated

prices starting at  
\$MX **2,450,000**



Walls and Roof

Kimiplaster Kimicolor Putty  
Sascab KP-10 white tone

Doors & Furniture

Tzalam wood or similar

Tiles

Sukabumi Stone 6x24cm.

Floor

Crema Maya Marble 60x60cm

Bar Cover

Preparation of Taj Mahal Quartzite

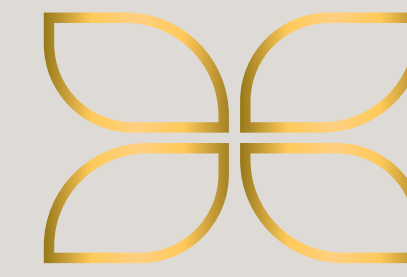
\*\* illustrative images





\*\* illustrative images



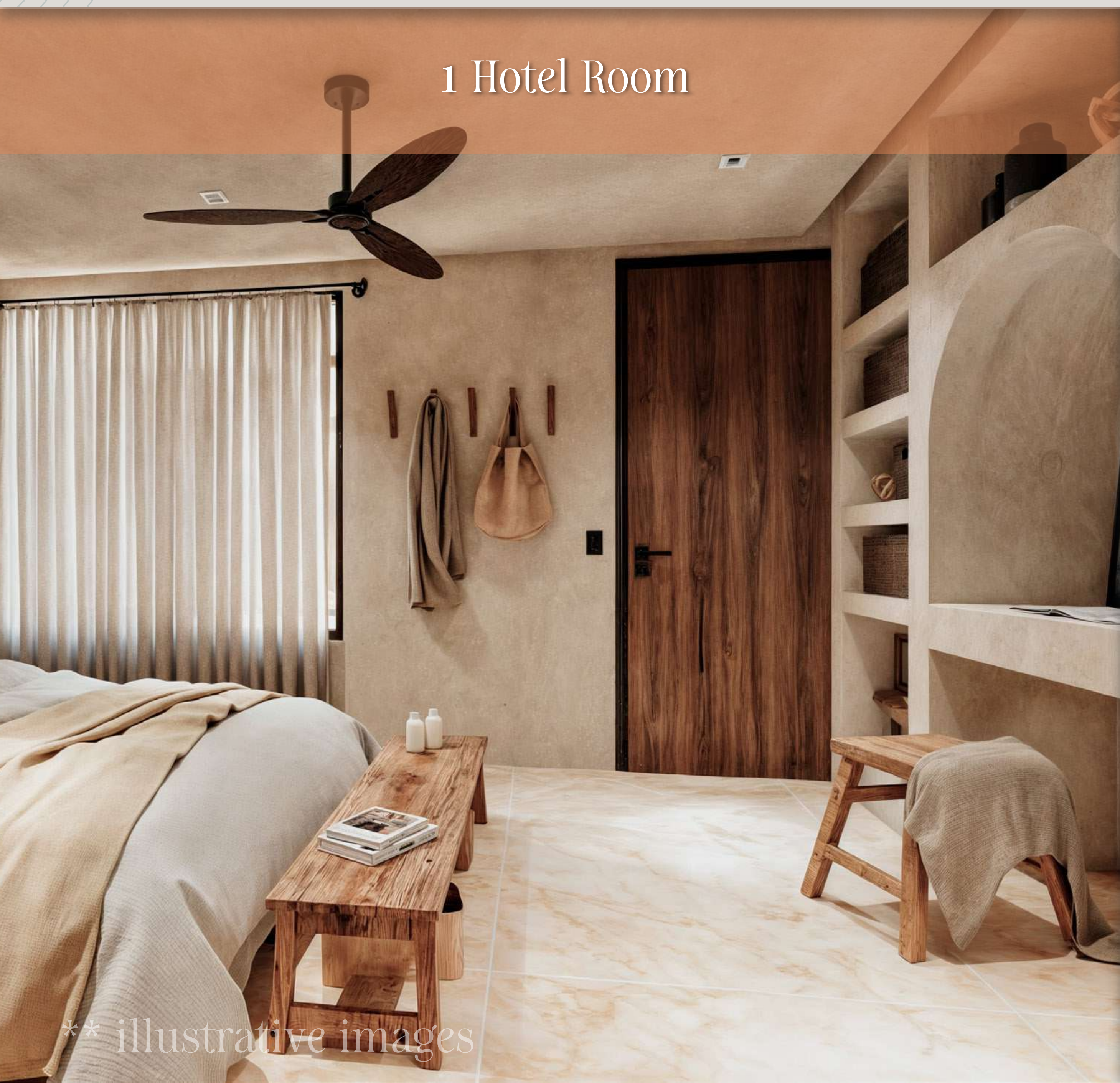


# "LOCK OFF" SYSTEM

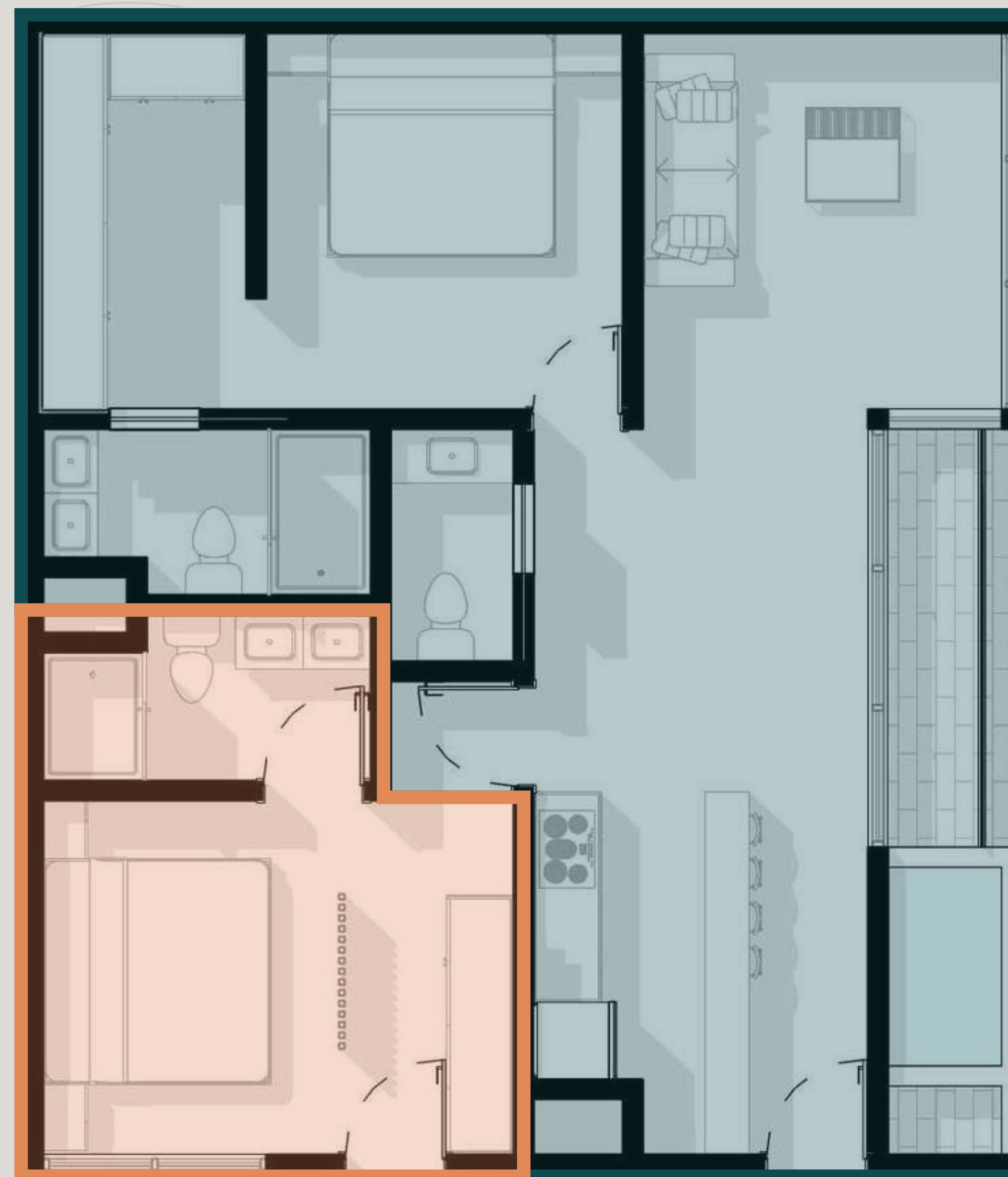
Enjoy your private space while you increase your income by renting other sections of your apartment.

The "LOCK OFF" units are made up of two independent units joined by a door.

1 Hotel Room



\*\* illustrative images



Lock off ^^^

^^^ Entrance

1 bedroom apartment.



\*\* illustrative images



# VERSATILE SPACE

Department section with the versatile ability to adapt, functioning as a living room or a third bedroom



Living room



Bedroom





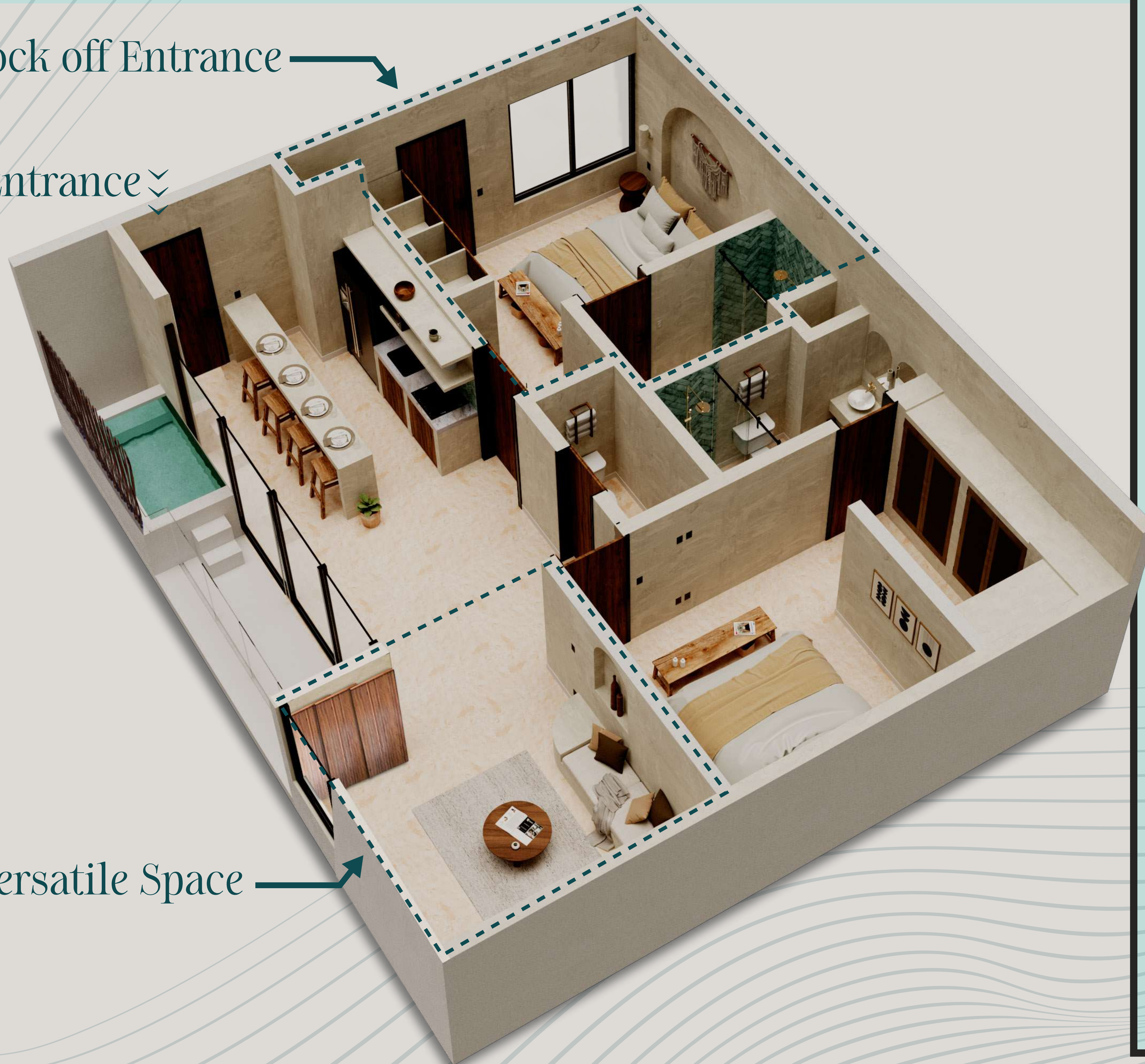
# 2 Bedrooms “A”

Lock off Entrance

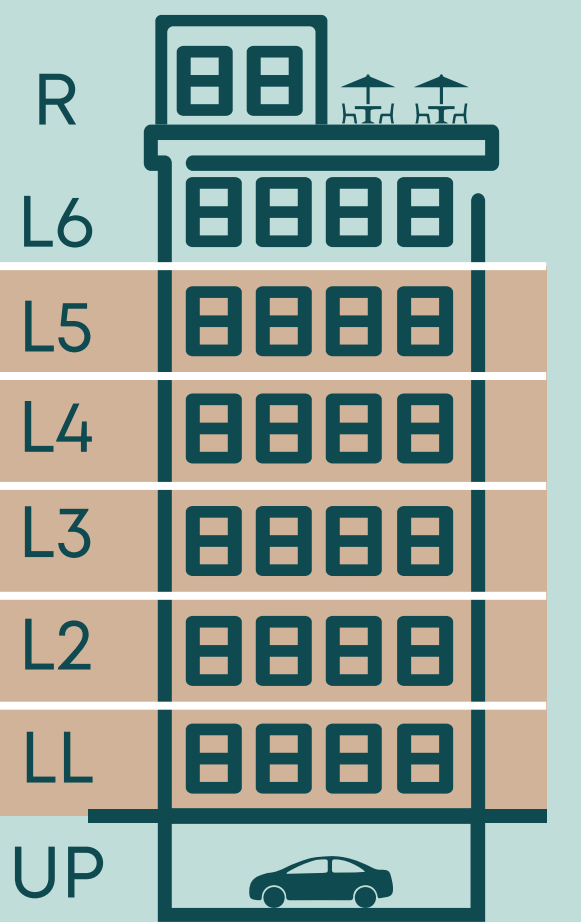
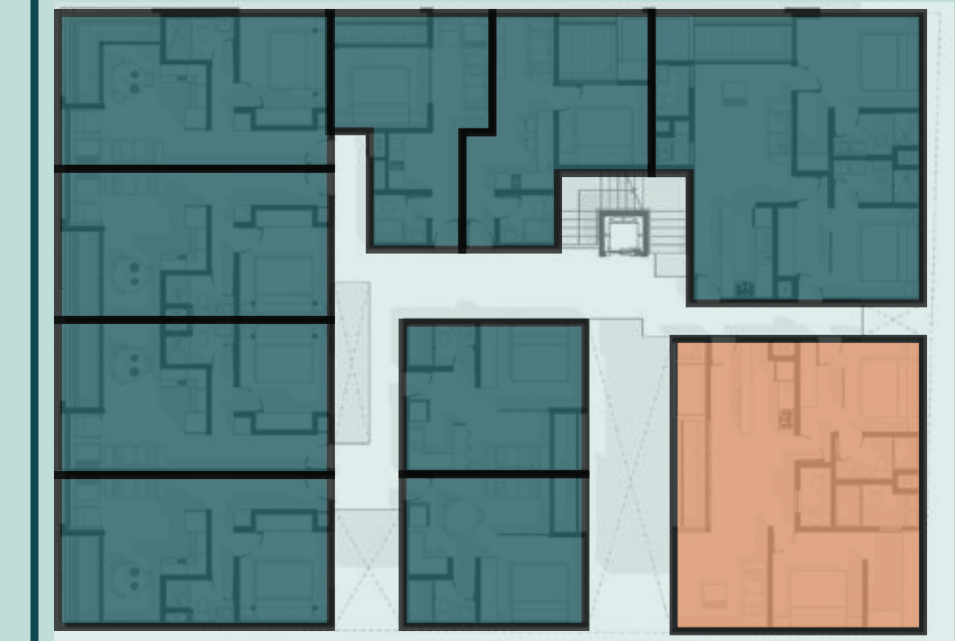
Entrance

Versatile Space

\*\*illustrative images



Caribbean Sea  
Fifth Avenue



Interior  
915 sqft

Exterior  
90 sqft

TOTAL  
1005 sqft

Furnished

Equipped

Decorated

prices starting at  
**\$MX 4,800,000**



# 2 Bedrooms “B”

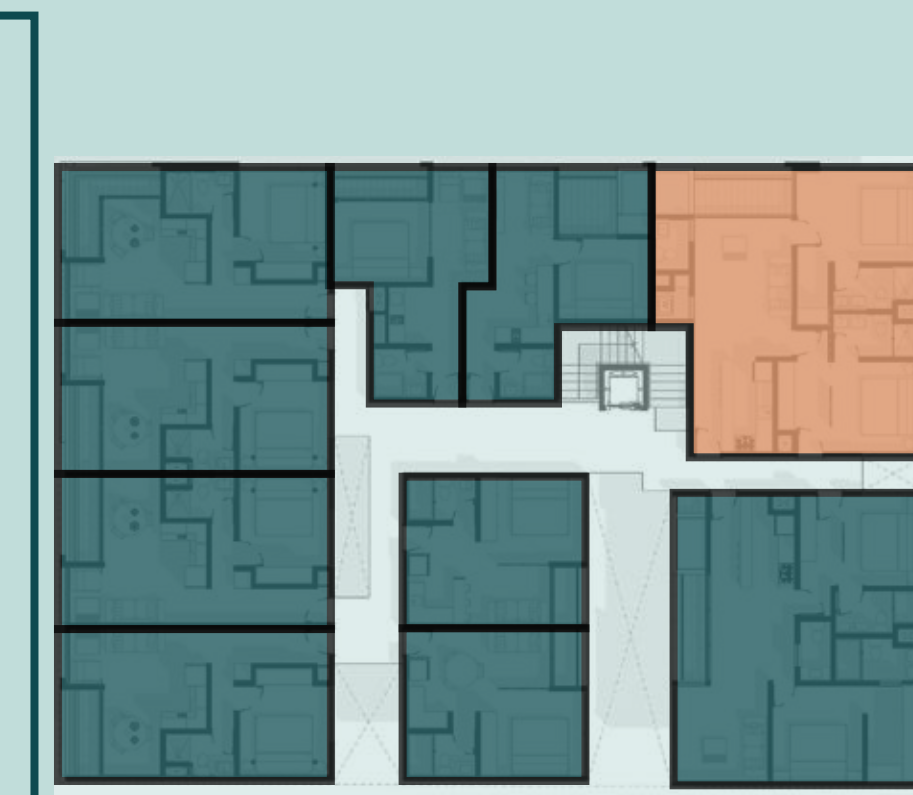










\*\*illustrative images

Entrance >>>>

Lock off  
Entrance

Caribbean Sea  
Fifth Avenue




R	
L6	
L5	
L4	
L3	
L2	
LL	
UP	

Interior  
926 sqft

Exterior  
87 sqft

TOTAL  
1013 sqft

 Furnished

 Equipped

 Decorated

prices starting at  
**\$MX 4,800,000**





\*\* illustrative images





\*\* illustrative images





\*\* illustrative images





\*\* illustrative images





*Welcome to Maia*

